

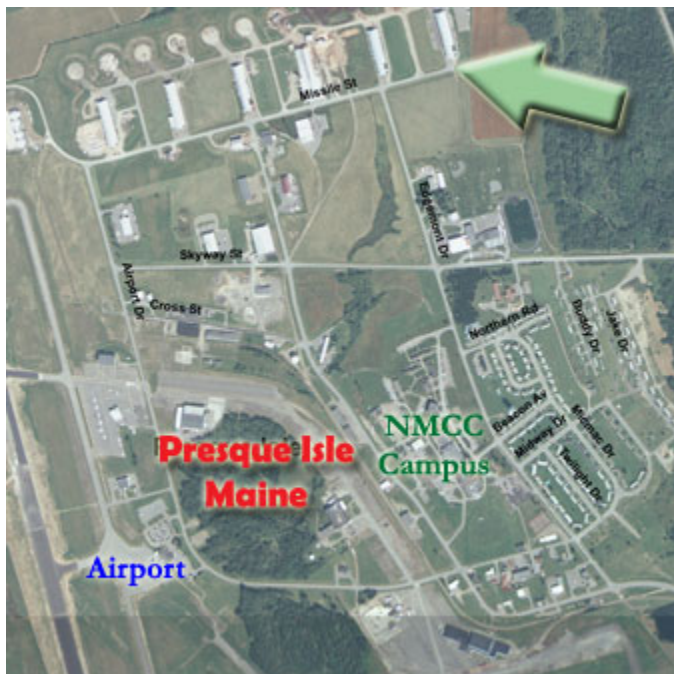


Building 1309 A (Remaining Space - Public Works building)

Location: 5 Missile Street
Skyway Industrial Park
Presque Isle, Maine

Total Square Footage: 40,000 square feet
Available Square Footage: 6,500 square feet

Production Area:	6,000 square feet	Office Area:	500 square feet
<u>Dimensions</u>		<u>Dimensions</u>	
Floor area:	60' x 100'	Floor Area:	25' x 20'
Ceiling Height:	27' 9" at Eave 39' 4" at Peak	Ceiling Height:	12'
Clear Span:	Yes		
Overhead Doors:	(1) 16' x 16' Ground Level		



Electrical: 120/208V – 200A – 3-Phase

Other Information:

- (2) One-ton Overhead Cranes
- 2" Water Service
- 4" Sanitary Service
- 6" to 12" Concrete Floor
- Ample Parking
- Multi-Tenant Building

Lease Rate: Negotiable

Owner: City of Presque Isle
Contact: Presque Isle Industrial Council
Larry E. Clark, Executive Director
Email: larryc@pqiiic.com

Floor Plan Attached

Floor Plan Building 1309 A (Remaining Space – Public Works)

