



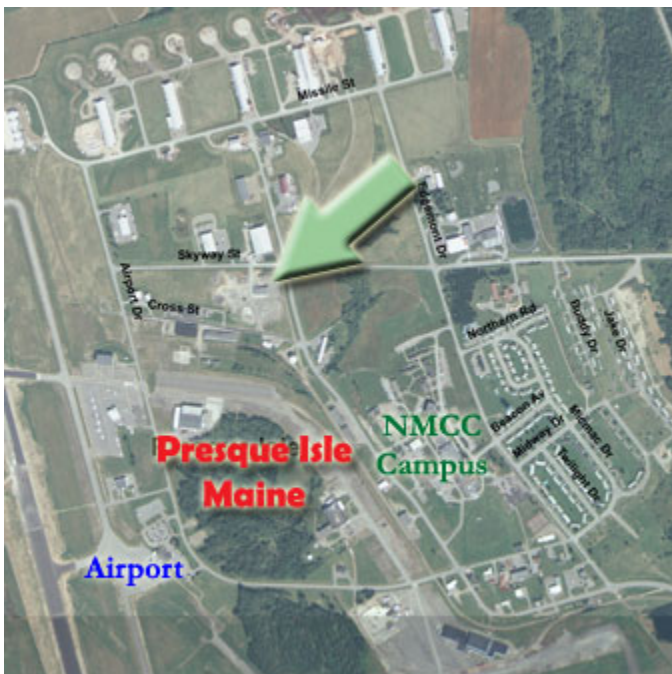
### **Building 615 (former Public Works Garage)**

**Location:** 920 Skyway Street  
Skyway Industrial Park  
Presque Isle, Maine

**Total Square Footage:** 7,800 square feet

<b>Garage Area:</b>	<b>6,000 square feet</b>
<b>Dimensions</b>	
Floor area:	60' x 100'
Ceiling Clearance:	13' 6"
Clear Span:	Yes
<b>Overhead Doors:</b>	(4) 16' x 14' (1) 16' x 12'

<b>Office Area:</b>	<b>1,800 square feet</b>
<b>Dimensions</b>	
Floor Area:	30' x 60'
Ceiling Height:	8'



**Electrical:** 120/208V – 200A – 3-Phase

**Other Information:**

1 1/2" Water Service

4" Sanitary Service

Concrete Floor

Ample Parking

**Lease Rate:** Negotiable

**Owner:** City of Presque Isle

**Contact:** Presque Isle Industrial Council  
Larry E. Clark, Executive Director

**Email:** [larryc@pqiiic.com](mailto:larryc@pqiiic.com)

### Floor Plan Building 615 (former Public Works Garage)

